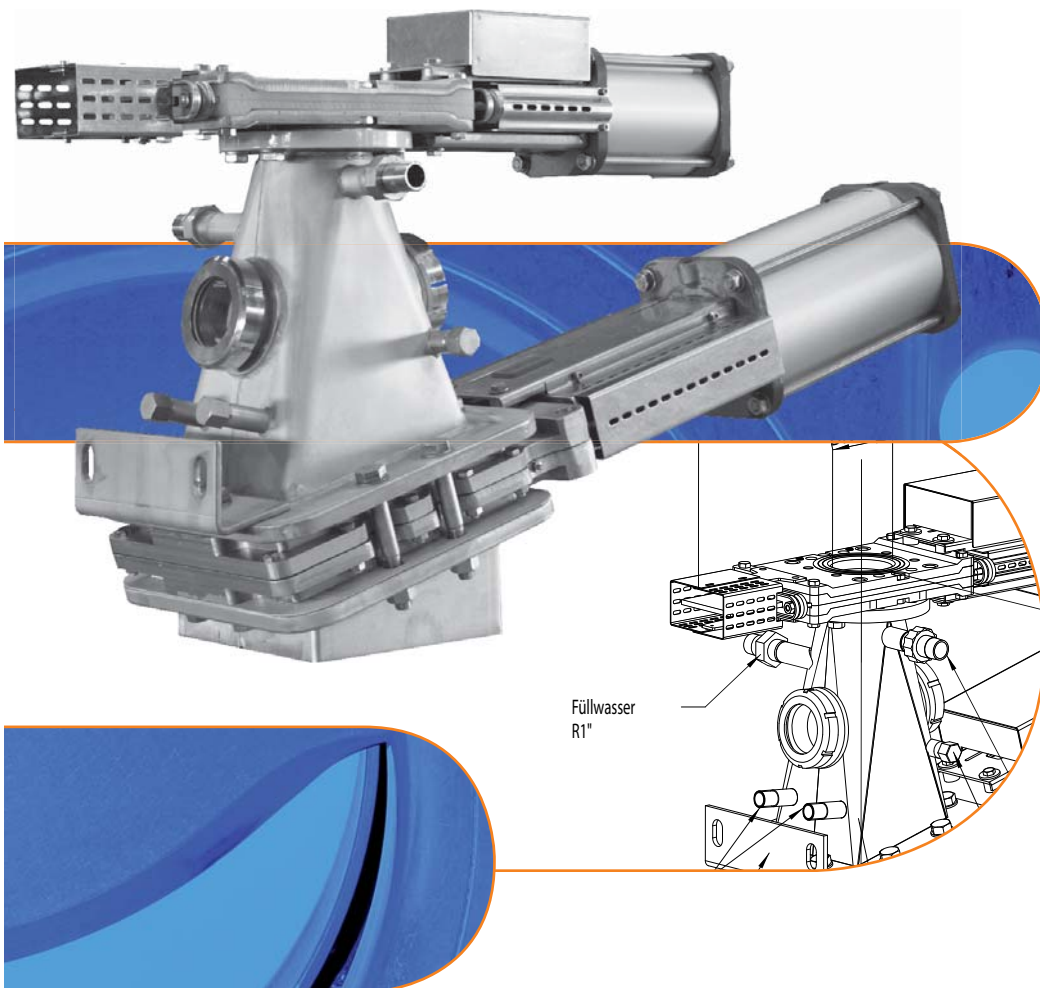


Valves of stainless steel

# Dirt Traps RSL

## of stainless steel



MARTIN LOHSE GmbH  
Unteres Paradies 63 · D-89522 Heidenheim  
Postfach 1565 · D-89505 Heidenheim  
Tel. +49(0)7321 / 755-42 · Fax +49(0)7321 / 755-97  
E-Mail: [server.ab@lohse-gmbh.de](mailto:server.ab@lohse-gmbh.de)  
Internet: [www.lohse-gmbh.de](http://www.lohse-gmbh.de)

## Applications



The LOHSE dirt traps RSL have been specially designed for the removal of foreign particles from the cleaning process.

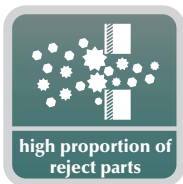
They are used to remove reject particles from fibrous media of various viscosity. They can be used in all types of cleaning machines, tanks and pipelines.

The maximum permissible operating temperature for LOHSE RSL dirt traps is 80 °C / 176° F (dirt traps for higher temperatures are available on request).

The maximum permissible operating pressure for LOHSE RSL dirt traps is 6 bar (dirt traps for higher pressures are available on request).



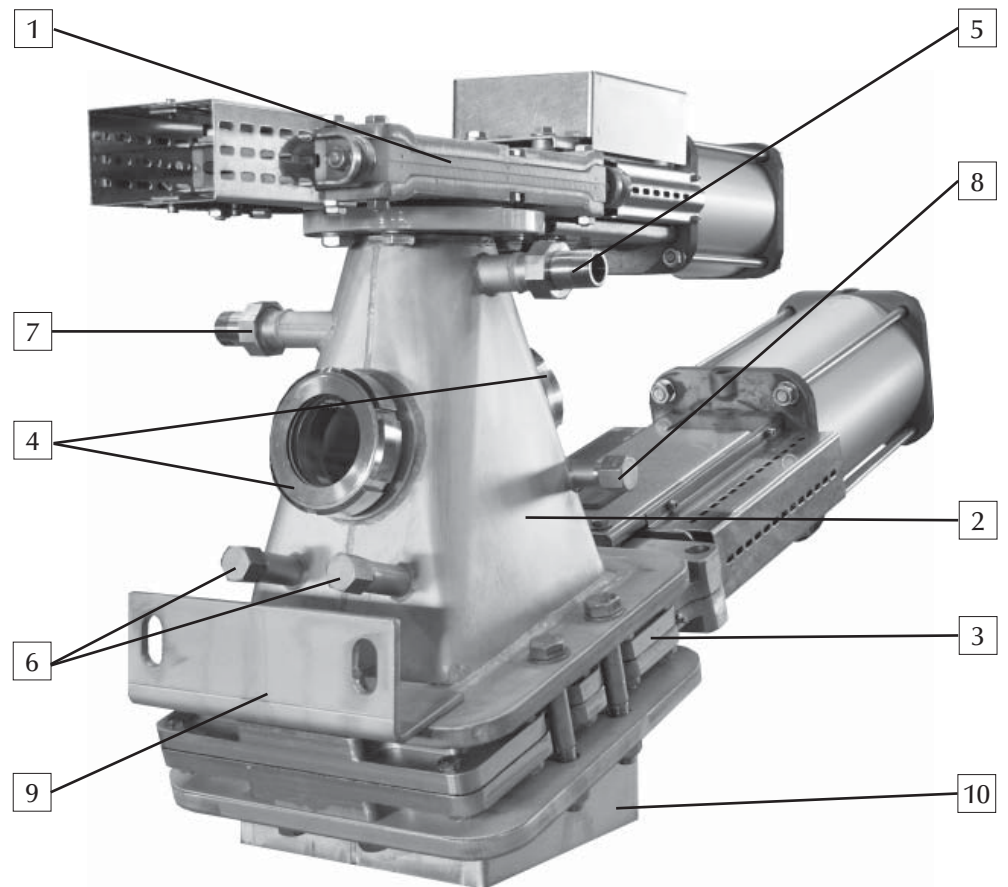
## Media



## Benefits

- the inclined positioning of the discharge valve prevents the build up of turbulence in the centre of the valve slide plate; as a result there is markedly less wear on the valve slide plate
- the right angular cross section of the discharge valve prevents small parts getting stuck between the valve body and the slide plate
- two back water connections prevent congestion in dead corners
- regulated heavy rejects removal: by means of 2 sight glasses an optimal adjustment of the back water level becomes possible
- pressure relief when at its highest level by means of an air extraction connection
- dirt trap volume can be selected (see list)

## Construction



pos.	description	remark
1	inlet valve CDSVP/G	round cross-section
2	sluice chamber	round to rectangular
3	discharge valve AEQP/G	rectangular cross-section
4	sight glasses	
5	air relief C	periodical operating interval
6	cleaning/ filling connections A / B	periodical operating interval
7	flush water connection D	connection recommende by manufacturer
8	flush water connection E	connection recommende by manufacturer
9	attaching device	
10	outlet piece	

## Process description

### Start of dirt trap control

Power to solenoid valves	„on“
Water pressure	„ok“
Water	„supply ok“
Pump of cleaning machine	„off“
Compressed air for shut-off valve	„supply ok“
- Pressure	„ok“
- Flow control valve	„adjusted“

### START – Flushing phase of dirt trap

The moment the pump in front of the cleaning machine is started, the timer relay of the cycle control system is started.

After the cycle time has lapsed:

- Timer relay cycle time	„0“
- Upper shut-off valve	„closed“
- Lower shut-off valve	„open“
- Filling water solenoid valve	„open“
- FILLING timer relay	„on“ (10 to 20 sec.)
- Signal lower valve	„closed“ via exhaust air restrictor
- VENTING timer relay	„on“ (10 to 20 sec.)
- Signal lower valve	„closed“
- FILLING timer relay after time has lapsed	„off“
- Filling water solenoid valve	„closed“
- VENTING timer relay after time has lapsed	„off“
- Air relief solenoid valve	„closed“
- Upper shut-off valve	„open“

If required:

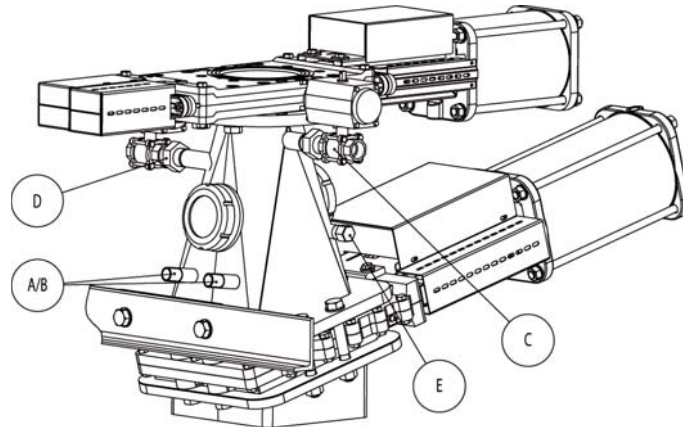
- Readjustment of dilution water by means of manually operated taps
- Next cycle time started through timer relay „on“ (5 to 120 minutes)

\* All values are approximate and must be adapted to the specific system!

### Interlocking:

- if there is no compressed air
- if there is no dilution water
- if there is no control voltage
- if there is no medium
- if the medium pressure drops in front of the cleaning machine

## Technical data



Type	Inlet valve Reject-valve type CDSVP/G	Outlet valve Reject-valve type AEQP/G	Volume [l]	Overall height [mm]	Air relief C [inch]	cleaning/ filling connections A / B [inch]	flush water connect. D [inch]	flush water connect. E [inch]
RSL 50/150	DN 50	DN 150	~ 5	682	1/2	1/2	1	3/4
RSL 65/150	DN 65	DN 150	~ 5	682	1/2	1/2	1	3/4
RSL 80/150	DN 80	DN 150	~ 5	695	1/2	1/2	1	3/4
RSL 100/150	DN 100	DN 150	~ 8	635	1	3/4	1	3/4
RSL 100/200	DN 100	DN 200	~ 11	650	1	3/4	1	3/4
RSL 100/250	DN 100	DN 250	~ 15	634	1	3/4	1	3/4
RSL 125/250	DN 125	DN 250	~ 15	635	1	3/4	1	3/4
RSL 150/200	DN 150	DN 200	~ 13	660	1	3/4	1	3/4
RSL 150/250	DN 150	DN 250	~ 17	662	1	3/4	1	3/4
RSL 200/250	DN 200	DN 250	~ 22	745	1	3/4	1	3/4
RSL 250/300	DN 250	DN 300	~ 40	823	1	3/4	1	3/4

Outlet valve of cast iron (G) or stainless steel (E).

## Germany + Switzerland

**MARTIN LOHSE GmbH**  
Postfach 1565  
89505 Heidenheim  
Phone: +49 (0) 73 21 / 7 55-0  
Fax: +49 (0) 73 21 / 7 55-99  
server.ab@lohse-gmbh.de  
www.lohse-gmbh.de

## Australia + New Zealand

**Voith Paper**  
**Australia & New Zealand Pty Ltd**  
Suite 10/33 Waterloo Road  
North Ryde, NSW 2113  
Phone: +61 (02) 9888 9399  
Fax: +61 (02) 9888 9899  
vfaz@voith.com

## Austria + CZ, SK, SLO, HR, H

**Peter Reiter**  
Handel Mazzetti-Str. 85  
3100 St. Pölten  
Phone: +43 (0) 27 42 / 7 73 66  
Fax: +43 (0) 27 42 / 7 73 66  
fa.reiter@aon.at

## Belgium

**Hanwel Belgium S.A.**  
Winninglaan 15  
9140 Temse  
Phone: +32 (0) 3 / 7 11 03 53  
Fax: +32 (0) 3 / 7 11 05 79  
info@hanwel.be  
www.hanwel.be

## People's Rep. Of China

**Shanghai Fier Mechanical Co. LTD**  
Room B4, 15/F HuaFu Bldg.  
No. 585 LongHua xi Rd.  
ShangHai, China 200232  
Phone: +86-21-54591038  
Fax: +86-21-54240616  
MP: 13611665381  
shfier@163.com  
www.fier.com.cn

## Denmark

**Uni-Valve A/S**  
Sydvestvej 138 – 140  
2600 Glostrup  
Phone: +45 (0) 43 43 82 00  
Fax: +45 (0) 43 43 74 75  
mail@uni-valve.com  
www.uni-valve.com

## Finland

**Aseko Oy**  
Tinankuja 3  
02430 Masala  
Phone: +358 (10) 400 10 12  
Fax: +358 (10) 400 12 00  
markkinointi@aseko.fi  
www.aseko.fi

## France, MA, TN, DZ

**T.N.P.**  
4, Le Parvis  
94100 Saint-Maur  
Phone: +33 (0) 1 / 55 97 11-11  
Fax: +33 (0) 1 / 48 83 52 07  
info@tnp.fr  
www.tnp.fr

## Great Britain

**Voith Turbo Ltd.**  
6 Beddington Farm Road  
Croydon, Surrey CRO, 4XB  
Phone: +44 (0) 2 08 / 6 67 03 33  
Fax: +44 (0) 2 08 / 6 67 04 03  
kevin.bracken@voith.com

## Greece

**Dimitrios Mikopoulos**  
P.O. Box 77128  
17501 Athens-Pal. Faliro  
Phone: +30 210 / 9 88 44 03  
Fax: +30 210 / 9 88 21 76  
mikoath@otenet.gr

## India

**Antrieb Technik Private Limited**  
59 (old 359) Sidco Industrial Estate  
Ambattur  
Chennai-600 098  
Tamilnadu / INDIA  
Phone: +91 (44) 262 – 58303  
Fax: +91 (44) 2819 – 3718  
antrieb.technik@gmail.com

## Indonesia, Singapore, Malaysia

**P.T. VOITH PAPER**  
Perkantoran Hijau Arkadia  
Menara B, 15th floor  
Jl. Letjen. TB. Simatupang kav. 88  
Jakarta 12520, INDONESIA  
Phone : +62 (21) 7884 5922  
Fax : +62 (21) 7884 5925  
bertinus.tirtadihardja@voith.com

## Israel

**P. B. A. Wiesner Ltd.**  
P. O. Box 4622  
Petach-Tikva 49277  
Phone: +972 (0) 3 / 9 05 21 11  
Fax: +972 (0) 3 / 9 05 21 10  
mailnet@pba.co.il

## Italy

**Techno Paper S.R.L.**  
Viale Colleoni, 25  
20041 Agrate Brianza  
Phone: +39 039 / 6 05 68 86  
Fax: +39 039 / 6 05 67 75  
info@techno-paper.com  
www.techno-paper.com

## Japan

**Voith IHI Paper Technology Co.Ltd.**  
Kyobashi Bldg. 3F  
2-9-14 Yaesu  
Chuo-ku  
104-0028 Tokyo  
Phone: +81 (0) 3 3277 / 4102  
Fax: +81 (0) 3 3277 / 4130  
info@voith.ihi.co.jp

## Korea

**C.S-Automation Co., Ltd. (Customer Satisfaction Automation)**  
#804 Sejung Technovalley  
279-5 Songjeong-Dong  
Heungdeok-Gu  
Cheongju-Si  
South Korea. 361-290  
Phone: +82 43 276 1332  
Fax: +82 43 278 1332  
changseol@korea.com

## Netherlands

**Hanwel B. V.**  
Jan Tinbergenstraat 209  
7559 SP Hengelo  
The Netherlands  
Phone: +31 74-2650000  
Fax: +31 74-2650001  
verkoop@hanwel.com  
www.hanwel.com

## Norway

**KSB Lindflaten AS**  
Vollsveien 9  
1366 Lysaker  
Phone: +47 67 12 99 00  
Fax: +49 67 12 99 01  
firmapost@lindflaten.no  
www.ksblindflaten.no

## Philippines

**R. Dan and Co., Inc.**  
20 Alfonso St.  
Rosario  
Pasig City 1609  
Phone: +632 – 6558796  
Fax: +632 – 6562089  
ester.poe@robertdan.com.ph  
www.robertdan.com.ph

## Poland

**Waldemar Kulicki**  
ul. Heweliusza 37/4  
87-148 Papowo Toruńskie  
Phone: +48 (0) 56 / 6783399  
Fax: +48 (0) 56 / 6783880  
waldemar-kulicki@wp.pl  
www.wkulicki.eu

## Portugal

**Celpapel, Lda.**  
Rua Armando Cortez, 1 – 1º D  
2770-233 Paço de Arcos  
Phone: +351 (0) 21 / 313 8340  
Fax: +351 (0) 21 / 356 1335  
office@celpapel.com

## Rep. of South Africa

**Voith Turbo (Pty) Ltd**  
P.O. Box 13171  
Witfield, 1467  
Gauteng, SOUTH AFRICA  
Phone: +27 11 418 4000  
Fax: +27 11 418 4080  
info.vtza@voith.com  
www.rsa.voithturbo.com

## Spain

**CELPAP EQUIPOS, S.L.**  
C/Amposta, 14-18  
08174 Sant Cugat del Vallés  
(Barcelona)  
Tel. +34 93 415 18 75  
Fax. +34 93 237 03 81  
celpap@celpap.com  
www.celpap.com

## Sweden

**PA-Ventiler AB**  
Sagbäcksvägen 38  
43736 Lindome  
Phone: +46 (0) 31 / 99 25 00  
Fax: +46 (0) 31 / 99 25 03  
info@paventiler.se  
www.paventiler.se

## Taiwan

**E-Chen Engineering Co., Ltd.**  
3F-3, No. 151, Sec. 4,  
Hsin-Yi Road,  
Taipei, Taiwan, R.O.C.  
Phone: +886 (0) 22 / 7056185  
Fax: +886 (0) 22 / 7 04 59 67  
echen123@ms15.hinet.net

## Thailand

**Weston Myer Ltd.**  
8 Soi Seri-Thai 58  
Seri-Thai Road  
10510 Minburi Bangkok  
Phone: +66 (0) 2 / 3 74 58 69  
Fax: +66 (0) 2 / 3 75 – 11 79  
comm1@westonmyer.com

## Turkey

**Sanrep Kağıt San. ve Tic. Ltd. Şti.**  
Altıyol, Kuşdili Caddesi No:19/7  
H.Fazlıoğlu İş Merkezi  
34714 Kadıköy – İSTANBUL  
Phone: +90 216 345 40 48  
Fax: +90 216 330 73 12  
sanrep@sanrep.com  
www.sanrep.com

## USA, Canada, Mexico

**Voith Paper Inc.**  
2200 N. Roemer Rd.  
Appleton, WI 54912-2237  
Phone: +1 (0) 920 – 731 – 0769  
Fax: +1 (0) 920 – 731- 0240  
troy.vanasten@voith.com